



**Contracting, Trading, Logistics, Consultancy & Manpower services**



Rossais Tower, 5<sup>th</sup> Floor, Office No. 502,  
Ahmed Al Hawwari Street, Al-Murabba, Riyadh 12626  
[elsagroupksa.com](http://elsagroupksa.com)

## Group of Companies



Barakat Al Shamal

• -TRANSPORATION - •

## OUR STORY

We have started our journey in 2001 under the company name **Barakat Al-Shamal Trading Est.** with activity of Contracting.

Then in 2004 extended this activity to Ceramic and Tiles with a great Vision. In 2014 we have started Service Apartment and Hotel Named **Rahat Al Narges**. Finally in 2022 we have introduced **ELSA Integrated Contracting Company** with a Great Vision of Contracting. ELSA has diversified its business to **ELSA Immigration Consultancy** with a vision of providing services Work Permit from Saudi Arabia to Europe to support the people who wants to migrate from Saudi Arabia to Europe. **Heaven Park** an another Milestone of Real Estate field, have started in 2025 with a great vision. **ELSA Group** is committed to provide the smooth and best services for the clients.

## Company Background

ELSA Group, a multi-functional 100% Saudi own company providing services including Construction & Contracting, Tiles & Ceramics, Transportation, Real Estate, Laundry, Coffeeshop, Consultancy and Manpower Services. We are committed to creating transformative solutions that shape the future and inspire the next generation to excel. We have been experienced in Manpower, Contracting, Engineering and it supply our objective is to work within the well-recognized industrial, integrators in KSA. As the growth of KSA's business sector with Vision 2030, our services expended to expected. ELSA Integrated Contracting Company has always prevailed over strong challenges and intense market competition through its highly professional human resources, punctuality and providing the best services.

Message from

## Founder & CO



It is with great pride and gratitude that I share the journey of the ELSA GROUP. What began as a humble vision has grown into a trusted name because of the unwavering support of our clients and the dedication of our team. Every service we deliver carries our commitment to honesty, responsibility, and excellence.

I believe that true success is built not only through business achievements but through the relationships we create along the way.

Thank you for placing your trust in us. We remain devoted to serving you with sincerity and a continued passion for growth.

A handwritten signature in blue ink, appearing to read 'Abdulaziz Al-Subaie'. The signature is stylized with fluid, connected letters.

Abdulaziz Al-Subaie  
Founder & CO

Message from

CEO



I'm very glad to spell the name of ELSA Group. Our vision is to create meaningful impact through reliable services and strong partnerships. We believe in continuous improvement, customer satisfaction, and delivering results that matter. Your trust motivates us to grow every day.

At Elsa Group, every client is a valued partner in our success. We work tirelessly to provide services that truly make a difference. Our promise is to stay committed, transparent, and focused on helping you achieve your goals.

Thank you for trusting us with your needs. We look forward to serving you even better in the future.

A handwritten signature in blue ink, consisting of stylized initials 'S' and 'J' followed by a flourish.

SHAH JALAL GAZI  
CEO

# What We Do?

## CONTRACTING



ELSA engaged in the provision of manpower services by our employees for the purposes of work for another person

## CONSULTATION



As a catalyst ELSA wants to improve operations and efficiency, growth of businesses or maintain positive momentum.

## TRADING



Trading is a regular phenomenon at ELSA Group

## CAREER

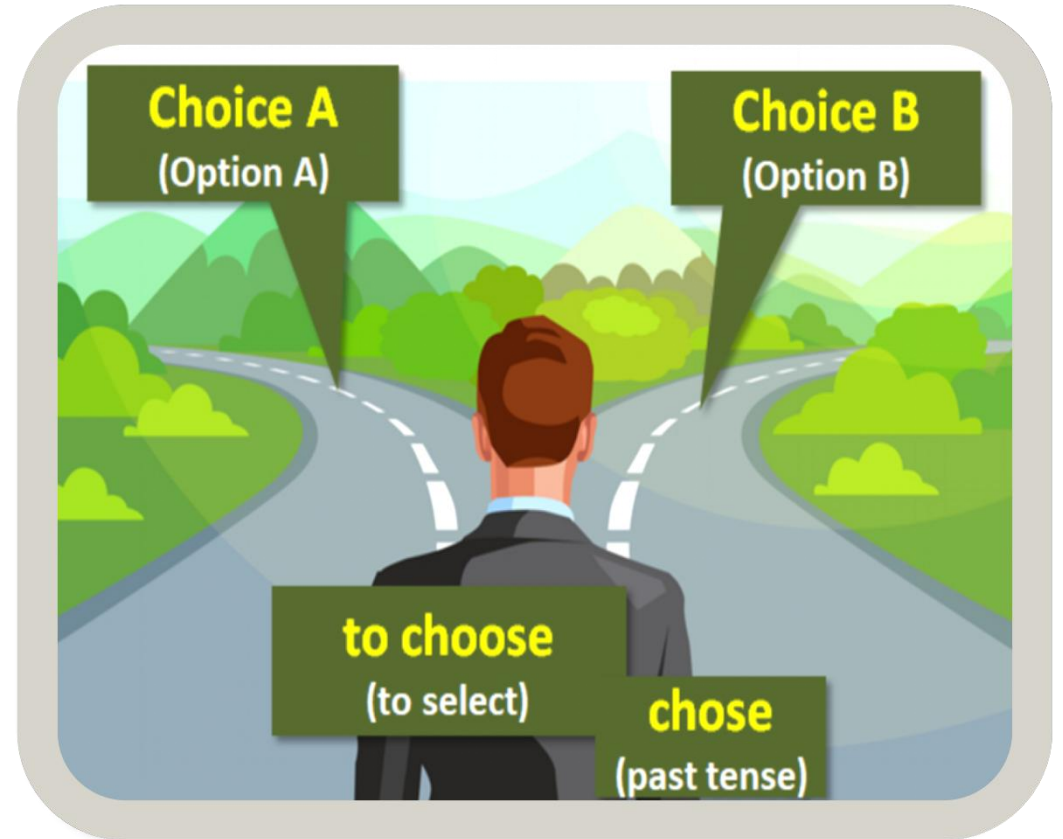


Fresh Talent plus Top Employers, create your career with us



## Why To Choose Us

- - We are specialized in each and every sector that we are handling
- - Customized services for each Sector.
- - Transparency in documentation.
- - We work end to end, B2B & B2C.
- - Our employees are friendly, knowledgeable and quick to respond.
- - Our services include faster processing.



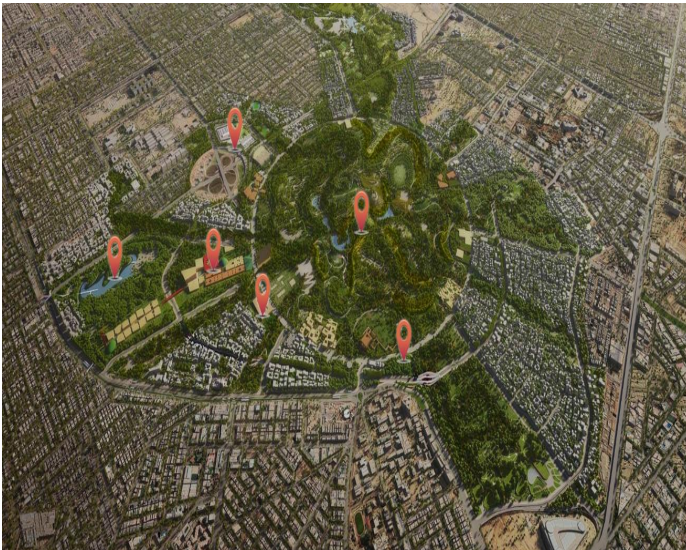


# Our Services

## Construction & Contracting

Construction and Contracting services encompasses with a range of activities including

- General Contracting
- Infrastructure Development
- Rental Manpower Services
- Turnkey Solutions
- Specialized Services



## Our Services

### Work Permit Services

Work Permit services encompasses with a range of activities including workers migration from Saudi Arabia to different countries in the world.

Work Permit Services includes

- Consultation, - Assessment, - Documentation & Support Services.



**ELSA**  
IMMIGRATION  
CONSULTANCY

CHOOSE YOUR EXACT DESTINATION

### Visa & Immigration Consulting

Planning to study, work, or settle in Europe?  
Let our expert Visa & Immigration Consulting Services guide you through the entire process.

**ROMANIA** **BULGARIA** **POLAND**

Rossais Tower  
5<sup>TH</sup> Floor, Office No 502  
Riyadh, Saudi Arabia

+966 511965905

+966 590809090

hrelsagroup@gmail.com

elsagroupksa.com



# Migration To Europe

Moving to Europe offers a wealth of opportunities for personal growth, cultural enrichment, and professional development. The migration history to Europe is marked by a series of significant events and movements that have shaped the continent's demographic and cultural landscape. From ancient times to the present, Europe has been a center of migration, with various groups and cultures moving across the continent for different reasons.

Here are some key points to consider when planning your migration to Europe:

- Legal Residency
- Financial Preparation
- Choosing the right country
- Understanding your path to European Residency
- Professional Integration and Employment
- Cultural Adaptation and Daily Life

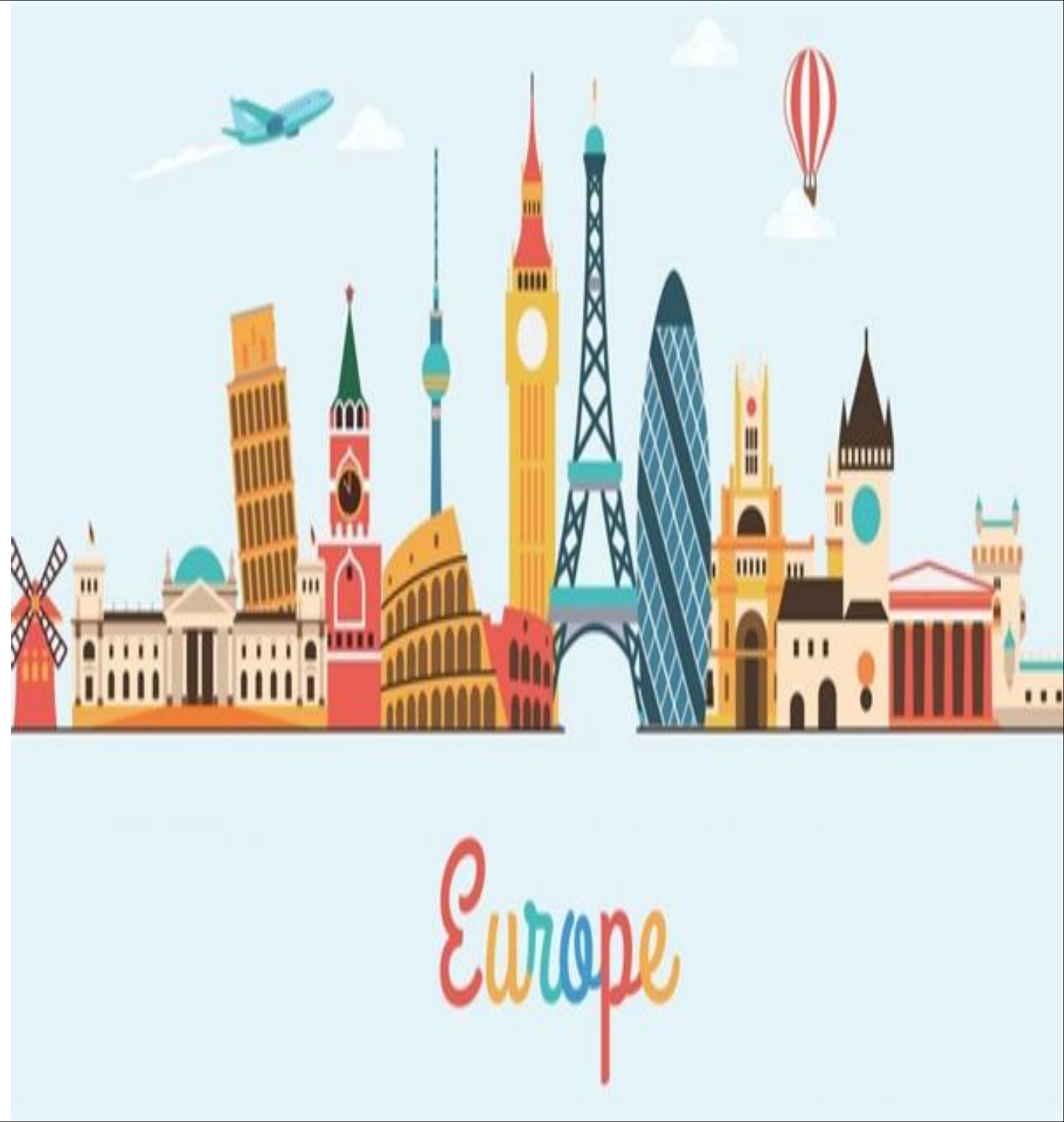


# Migration To Europe

SEASONAL WORK  
PERMIT

Temporary Residency Permit  
(TRC)

SCHENGEN ZONE



# Our Services

## Recruitment & Manpower Services

**We Recruit Skilled and Semi-Skilled Manpower for our different projects**

**We recruit**

- Electrician
- Plumber/Pipe Fitter
- Mason
- Steel Fixer
- Fabricators
- Welder
- Glass Fitter
- Duct Fitter
- Fabricator
- Labor/Helper
- Cleaner
- Load Unload and Warehouse Labor
- Etc.

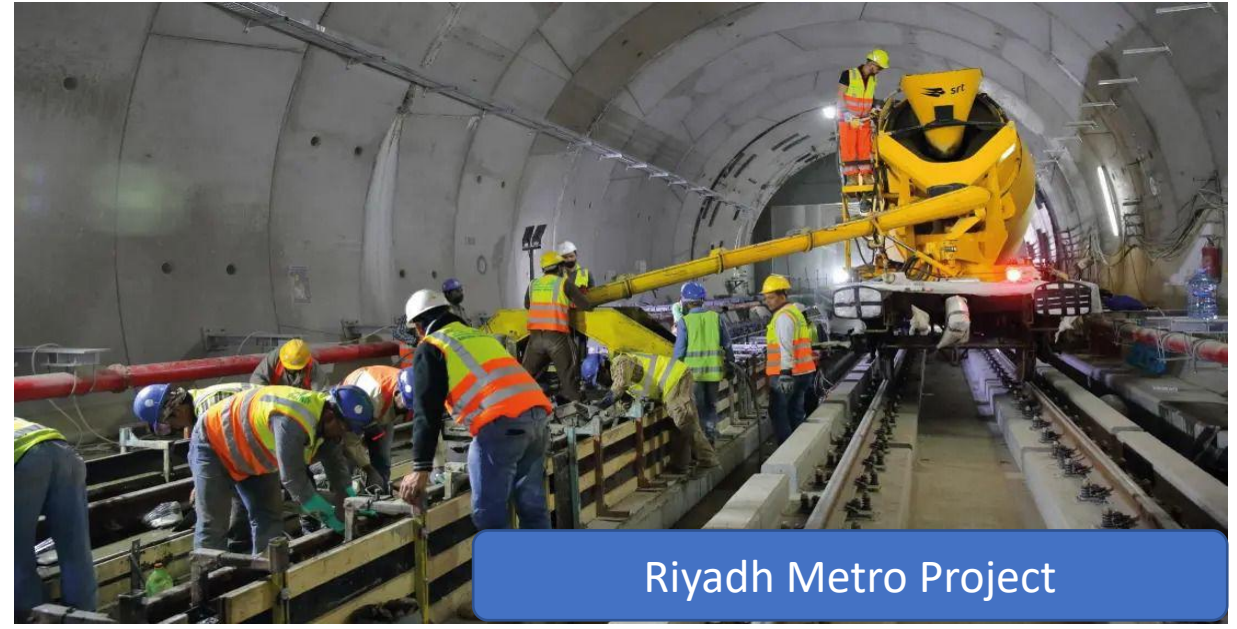




## Construction & Contracting



Contracting Management  
Team



Riyadh Metro Project



King Salman Park, Riyadh Project

ELSA Workers during briefing





# Running Project Work at Boulevard Park, Riyadh







Safety is Prioritize at any project



Running Project: Qiddiya (IDS-FEMCO Consortium) Project

# Running Project Work at Boulevard Park, Riyadh





## Running Projects



## Running Projects



KSPA



King Salman Park Project



## Handedover Projects



King Abdullah City Riyadh

## Meet The Team



Accountant

YASEER SAYED AHMED



Administrative Service

AHMED ADEL



Secretary CO

MOSHARROF HOSSAIN



## Meet The Team



Mechanical Engineer

MOHAMMED NASEER



Civil Engineer

AHMET KURT



Digital Marketing Executive

AFSHA KHAN



## Meet The Team



Project Supervisor  
NAZMUL HASAN



Project Supervisor  
MD SADDAM HOSSAIN



Project Supervisor  
SAIFUL ISLAM

## Meet The Team



Marketing Executive  
MAHEDI AZAD SHUVO



Sales Executive  
MOHAMMED SAEED



Camp Supervisor  
RAHAT MAHMUD

# Certification

وزارة التجارة  
Ministry of Commerce

شهادة السجل التجاري

شركة السا متكاملة للمقاولات شركة شخص  
واحد

البيانات الأساسية للسجل التجاري



7030148550

الرقم الوطني الموحد: 7030148550

تاريخ الإصدار: 19/07/2022

نوع الكيان: شركة ذات مسؤولية محدودة

صفات الشركة : (شخص واحد)

حالة السجل: نشط

1900  
mc.gov.sa

mcgovsa

Commercial License

# Certification



تاريخ الإصدار: 2022/11/15  
الرقم المميز: 3113672872



الهيئة العامة للزكاة والدخل  
General Authority of Zakat & Tax

ضريبة  
القيمة  
المضافة  
VAT

## شهادة تسجيل في ضريبة القيمة المضافة VAT Registration Certificate

تشهد الهيئة العامة للزكاة والدخل بأن المكلف أدناه مسجل في ضريبة القيمة المضافة  
بتاريخ 2022/11/15

Hereby, The General Authority of Zakat & Tax (GAZT) certifies that the taxpayer below is  
VAT registered on 15/11/2022

اسم المكلف:	شركة السا المتكاملة للمقاولات (شركة شخص واحد)	Taxpayer Name:
رقم التسجيل الضريبي:	311367287200003	VAT Registration Number:
تاريخ نفاذ التسجيل:	2022/12/01	Effective Registration Date:
عنوان المكلف:	الرياض الرياض، أبي العباس الحميري، 13265	Taxpayer Address:



كمكلف مسجل في ضريبة القيمة المضافة، لا يجوز لك تحصيل ضريبة القيمة المضافة من عملائك قبل تاريخ  
نفاذ التسجيل بالضريبة. في حال تبين غير ذلك، ستقوم الهيئة العامة للزكاة والدخل بتنفيذ الغرامات المستحقة.

هذه الوثيقة مرسلة من النظام الآلي ولا تحتاج إلى توقيع  
- الهيئة العامة للزكاة والدخل -

VAT Registration

# Certification



Membership No. :	746773	746773	رقم العضوية الموحّد :
Date of Issue:	04/08/2022	2022/08/04	تاريخ الإصدار:
Membership Class :	Third	الثالثة	درجة العضوية :
Riyadh Chamber Certifies			تشهد الغرفة التجارية الصناعية بالرياض بأن
			شركة السا المتكاملة للمقاولات (شركة شخص واحد)
Commercial Registration No.	1010817001	1010817001	مفيدة بالسجل التجاري / الترخيص رقم :
Certificate Expires on	26/06/2025	2025/06/26	ينتهي سريان هذه الشهادة في



- يلزم التحقق من الوثيقة عبر الرابط التالي <https://mybusiness.chamber.sa/> أو تطبيق (بوابة أعمال).
- للهواتف الذكية دون أدنى مسؤولية على الغرفة التجارية عن محتوى الوثيقة.
- تعتبر هذه الوثيقة مصادقة من غرفة الرياض ولا تحتاج إلى توقيع أو ختم.
- عند التعديل على الوثيقة أو محاولة العبث بها تعتبر لغاية وتعرض صاحبه للمساءلة القانونية.

Riyadh Chamber of Commerce



## Office Address

Corporate Office: Rossais Tower, 5<sup>th</sup> Floor, Office No. 502,  
Ahmed Al-Hawwari Street, Al Murabba, Riyadh 12626, Saudi Arabia

Contact No. +966 59 080 9090

Email: [hrelsagroup@gmail.com](mailto:hrelsagroup@gmail.com)

Web: [www.elsagroupksa.com](http://www.elsagroupksa.com)





**Thank You**